

t2

Guide for a successful installation

Before you install your new T2 integrated tap, there are a few things to bear in mind for a successful installation.

Consider water, waste, power and space.

Full installation instructions and cutting templates are provided in the product manual.

Capacity	Chilled 50 L/hr 80 L/hr
Temperature	Chilled 2°C
Dispense height	310mm
Power	230-240V
Dimensions	Tap W160 x D324 x H390mm Undercounter W320 x D430 x H390mm
System	ProCore® DryChill®
Technology	EcoMode DeepSparkle® (select models only)
Hygiene	Totality®

Minimum clearance 390mm.

Drip tray cutout 146 x 311mm.
Use cutting template provided in box.

311mm
146mm

10A* power supply.
Single socket within 2m of unit.
*Earth leakage protected

Mains waste connection.
or Bluetooth® Waste Kit

Mains supply potable water.
0.05MPa (0.5 bar) min pressure, within 2m of unit.

min 500mm
min 500mm
min 500mm
30mm
300mm
45mm

Vent kit cutout 300 x 30mm.
Allow clearance of 45mm each side.
Cutting template available.

T2 Cutting Template

SimpleFit® Vent Kit Cutting Template

borg&
overström

For support please contact



+44 (0)1362 695 006



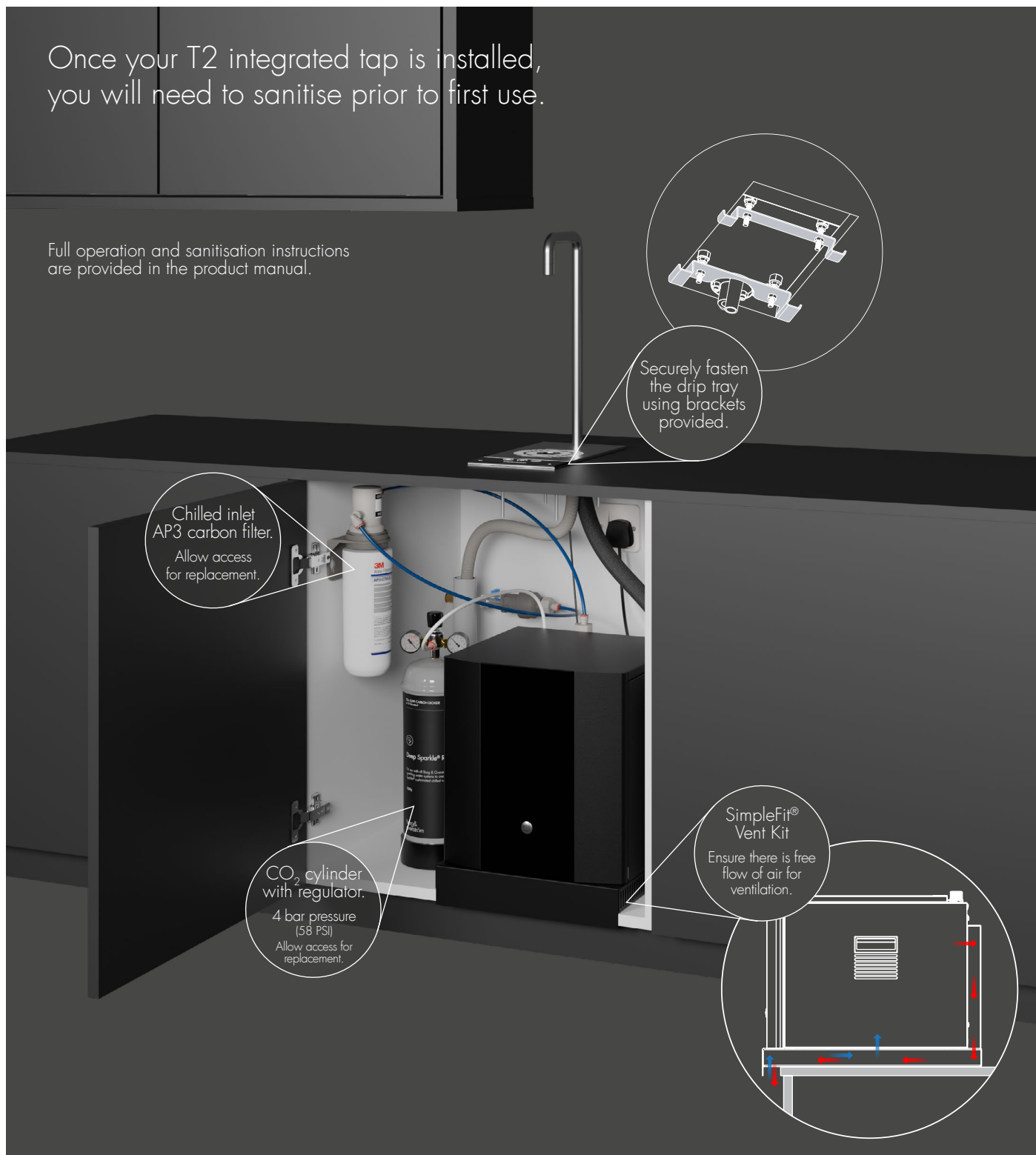
support@borgandoverstrom.com

VIEW T2
MANUAL



t2

Guide for a successful installation



borg&
overström

For support please contact



+44 (0)1362 695 006



support@borgandoverstrom.com

VIEW T2
MANUAL

