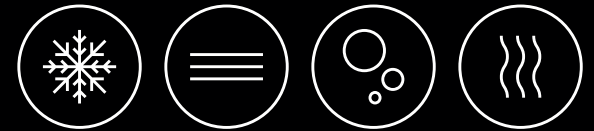


The future of hydration



Designers and
makers of the finest
drinking water
dispensing systems
in the world.



Contents

- 04 **Borg & Overström** - Founded in 2002
- 06 **Innovation** - Delivering high performance
- 08 **Sustainability** - Protecting the source of pure water
- 10 **Totality** - Hygiene-assured refreshment
- 12 **Reliability** - Produced in the UK
- 14 **A new icon** - The hallmark of a new era

- 16 **Our range at a glance**
- 18 **T1** - Advanced performance. Minimalist design.
- 20 **T2** - Refined hydration, digital precision
- 22 **T3** - Designing a hot tap revolution
- 24 **C2/C3** - High-performance hydration
- 26 **B3** - First choice for education and healthcare
- 28 **B4** - Compact design for flexibility
- 30 **B6** - Countertop water dispensing reimagined
- 32 **Specifications** - Choosing the right model
- 34 **Drinking vessels** - Environmentally-friendly vessels

- 36 **Partnerships** - With world-class industry-leading brands
- 38 **Global reach** - Available through our selected partners

Founded in 2002

To inspire the everyday
with original design and
thoughtful innovation.



Our mission is to move the experience of drinking water dispensing beyond the mediocre to the exceptional.

Distinctive
by design.

As we enter a new design era, we invite you to explore our growing range of water dispensers and tap systems.

This book describes our energy-saving and hygiene innovations, and the sustainable business practices that go into every Borg & Overström water dispenser.

It also includes full product specifications for all models, including next-generation water dispensers.

These are distinguished by the Maktens Borg castle marque and contain our most innovative technology yet.

**Thank you for your interest in
Borg & Overström**

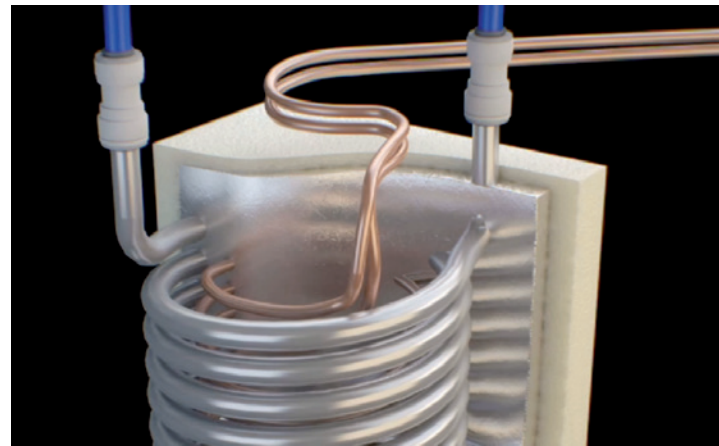
Innovation

Delivering high performance.

Whether we're improving production, designing new cooling systems, or making our products even more hygienic, we aim to keep our products at the leading edge. Here are some of the innovations from our R&D lab.

Dry Chill®

Sealed drinking water system with aluminium cooling block.



No water is stored within the system, which greatly reduces the opportunity for bacteria to become established within the appliance. Dry Chill® is also our most energy-efficient cooling system. Our proprietary aluminium cooling block produces a larger volume of lower temperature water than other systems.

Deep Sparkle®

Intense, long-lasting sparkling water.



The superior Deep Sparkle®, unique to Borg & Overström, is achieved through high-pressure saturation. Our Deep Sparkle® CO2 canisters, conveniently supplied in two sizes, are safe and easy to fit.

Connected dispensers

Diagnosis from a distance, the future of hydration.



We're helping distributors improve servicing and maintenance of water dispensers in the field through our mobile app. Connected water dispensers improve the speed of repairs and servicing efficiency.

Distinctive
by design.

Sustainability

Protecting the source of pure water is built into our business culture.



ISO certified

Certificate Number 13997
ISO 9001, ISO 14001

✔ **Greater efficiency with Dry Chill®**

Our Dry Chill® sealed tank technology delivers immediate and consistent cooling. It has the fastest recovery cycle ever built into a Borg & Overström water dispenser.

✔ **Energy-saving**

We're always finding new ways to save energy, including fitting our appliances with a standby mode which sends the unit to sleep when the room is unoccupied.

✔ **Eco refrigerant gas**

We've removed all fluorinated gases from our products. All appliances from January 2022 use the greener R290 or R600 refrigerant gases.

✔ **Sustainable supply chain**

R&D and Procurement are gradually bringing our supply chain closer to home to reduce our carbon footprint further.

✔ **Renewable energy**

Energy is supplied to our production facility via solar panels, making it entirely energy self-sufficient during daylight hours. Energy-efficient PIR lighting conserves energy.

✔ **Zero to landfill**

We're incredibly proud that nothing from Borg & Overström HQ is sent to landfill, whether it's cardboard or plastic from production or waste from the office.

✔ **Sustainable packaging**

Our products are shipped in sustainably sourced cardboard boxes that can be recycled on-site. We use the smallest boxes possible and exclude all non-recyclable packaging in all new product programs.

✔ **ISO 14001 accredited**

Borg & Overström is certified ISO 14001 for Environment Management Systems, but our ambition is to go further.

Totality®

Hygiene-assured refreshment.

Totality® is our unique assurance that water dispensed from a Borg & Overström water dispenser is as safe as it is refreshing.

Totality® includes six key components; sanitisation, filtration, surface treatments, sealed water processing and touchless operation. Here are four of those components in more detail. Dry Chill®, our sealed water processing system, is mentioned on page 6.

✓ **Sterizen® sanitisation**

Only Borg & Overström appliances are laboratory certified to be 99.999% bacteria reduced when leaving the factory. Our water dispensers are sterilised using Sterizen® sanitising infusion - our independently certified anti-microbial, antipathogen sanitising procedure. No other brand of watercooler goes through this sterilisation process.

✓ **Viovandt® LED-UV**

LED-UV water purification. A mercury-free and chemical-free UV water purification system for water dispensers. Viovandt® is the most powerful yet energy-efficient, ultra-violet purification system ever built into a Borg & Overström water dispenser.

✓ **Fynil® hygienic surface**

Biofilm, limescale and impact resistant epoxy resin finish. Our water dispensers have a double coating of Fynil®, a seamless, hard-wearing non-porous finish. This scratch and impact resistant epoxy-resin resists biofilm development and limescale cohesion for increased hygiene and longevity.

✓ **Touchless dispensing**

Enjoy pure refreshment with touch-free dispense options. Choose Bluetooth® app enabled or mechanical two-way or three-way foot switch. Both solutions can be shipped with selected appliances or retrofitted to existing B3.2 and B4.2 models.



Distinctive
by design.

Reliability

Produced in the UK to stringent quality control measures, certified to ISO 9001 standards.

Our products are designed and built in the UK and they're made to last. It's not unusual for appliances to still be going strong after ten years when correctly maintained and serviced.





Distinctive
by design.

Every dispenser off the line is thoroughly tested for leaks to ensure they are in full working order before undergoing our unique Sterizen[®] cleansing process. As a result, we have a 99.61% out-of-the-box success rate.

Our water dispensers are internationally certified by a third-party laboratory.

Global accreditations:



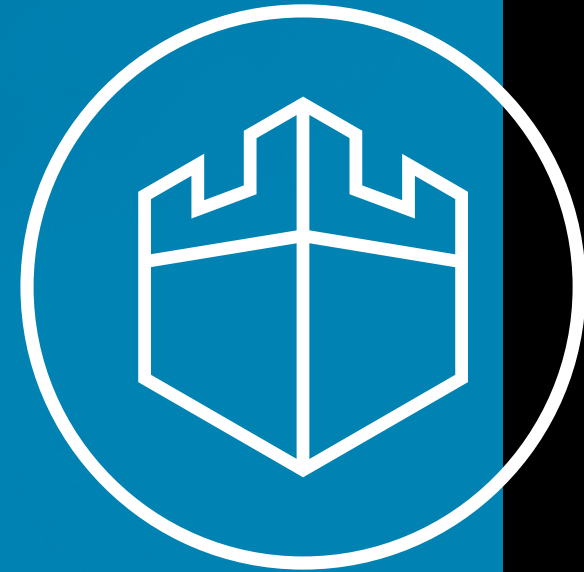
Other international standards include:

- ✓ NSF Reg. 4 (UK)
- ✓ CSA (Canada)
- ✓ ACS (France)
- ✓ Watermark (Australia)

A new icon

The hallmark
of a new era.

Next-generation appliances bear the Borg & Overström castle icon emblem as a marque of authenticity - we call it Maktens Borg. Water dispensers with this marque contain our most advanced features for increased performance, hygiene, and sustainability.



✔ **Nearshore sourced**

Our nearshore supply chain ensures reduced lead times, increased quality control, and a reduced carbon footprint.

✔ **Complete IP ownership**

Next-generation water dispensers are designed by us from the ground up, so we hold IP ownership for all components.

✔ **ISO 14001 certified**

Our manufacturing plant is solar-powered with net-zero impact during daylight hours. We also maintain a zero to landfill waste policy and ship products in sustainable packaging.

✔ **Energy-efficient**

Industry-leading energy-saving technology built-in to every appliance.

✔ **Connected water dispensers**

IoT enabled technology paves the way for new connected possibilities such as asset management and maintenance.

✔ **B-Corp endorsed**

Next generation water dispensers are B-Corp endorsed.

✔ **Touchless technology**

In this new hygiene-aware world, Borg & Overström leads the way with touchless water dispensing technology.

✔ **Eco refrigerant gas**

All next-generation appliances use non-Fluorinated refrigerant gases.

The future
of hydration.



t1



t2



t3



c3



b3



b4



b6

t1



**Advanced performance.
Minimalist design.**

The ideal solution for busy workplaces where space may be at a premium. With advanced dispensing features packaged in a minimal and contemporary design.

REASONS TO CHOOSE

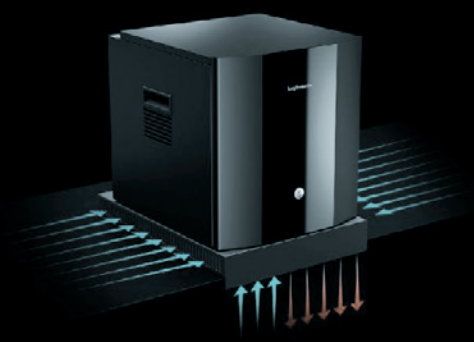
- Discreet yet powerful, ideal for busy workplaces
- Contemporary design for modern workplaces
- Advanced performance, high-capacity dispensing
- Powered by ProCore™ a next-gen dispensing system
- Cutting-edge hygiene features built-in
- Modern tap design with high-end durability



Distinctive
by design.

T1 Steel

ProCore® processing unit with Simple-fit Ventilation Base
Designed to maximise efficiency and enhance performance, the refined and simple to install ventilation base is supplied with every ProCore®.



- WATER SYSTEM
Dry Chill®
- CONFIGURATIONS
Tap system
- AVAILABLE COLOURS
Steel / Black
- WATER OPTIONS
Chilled / Ambient / Sparkling

t2

Refined hydration, digital precision.

A bold new generation tap system for modern offices and communal workspaces. Packed with digital technology for advanced performance, energy efficiency, and hygiene.

REASONS TO CHOOSE

- Discreet, antimicrobial hygienic control panel
- Bluetooth® enabled touch-free control
- 310mm dispense height for filling bottles and jugs
- Can be factory fitted with Viovandl® LED-UV
- Ultra-compact under counter ProCore® unit
- Low energy consumption, low-light standby mode
- Performance enhancing simplefit ventilation kit included





**ProCore® processing unit with
Simple-fit Ventilation Base**

Designed to maximise efficiency and enhance performance, the refined and simple to install ventilation base is supplied with every ProCore®.



Distinctive
by design.

WATER SYSTEM

Dry Chill®

CONFIGURATIONS

Tap system

AVAILABLE COLOURS

Steel / Black

WATER OPTIONS

Chilled / Ambient / Sparkling

t3



Designing a hot tap revolution

T3 is our first-ever drinking water tap system with a hot option, and it's distinctly Borg & Overström. The newest addition to our next-generation product suite, it's built from the ground up with premium aesthetics and our most advanced dispensing innovations.

REASONS TO CHOOSE

- Instant filtered chilled, ambient, sparkling and hot water
- Designed and manufactured with sustainability at the heart
- Bluetooth enabled touch-free dispense control
- Flush, easy-clean, antimicrobial hygienic control panel
- 310mm dispense height for filling bottles, coffee jugs and teapots
- Energy-efficient Vivandt LED-UV water purification system
- Ultra-compact under counter ProCore unit
- Low-energy consumption and low-light standby mode
- Future-proof digital connectivity



Distinctive
by design.

T3 Black

T3 Steel

**ProCore® processing unit with
Simple-fit Ventilation Base**

Designed to maximise efficiency and enhance performance, the refined and simple-to-install ventilation base is supplied with every ProCore®.



WATER SYSTEM

Dry Chill®

CONFIGURATIONS

Tap system

AVAILABLE COLOURS

Steel / Black

WATER OPTIONS

Chilled / Sparkling / Ambient / Hot

c2/c3

High-performance hydration.

Practical, reliable and visually striking, this new generation tap brings a high-capacity refreshment solution to commercial environments.

REASONS TO CHOOSE

- Delivers 80 litres per hour
- Available as a two-tap or three-tap system
- Can be factory fitted with Viovandt® LED-UV
- Ultra-compact under counter ProCore® unit
- Low-energy consumption
- Performance enhancing simplefit ventilation kit included





C2 Twin-head Tap



C3 Triple-head Tap

WATER SYSTEM

Dry Chill®

CONFIGURATIONS

Tap system

WATER OPTIONS

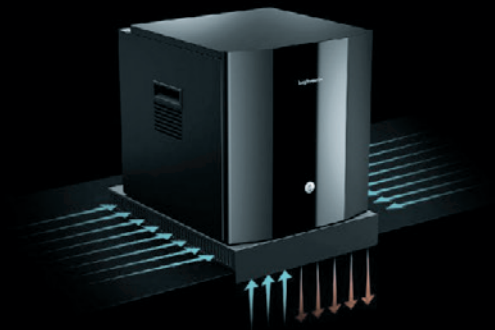
Chilled / Ambient / Sparkling



Distinctive
by design.

ProCore® processing unit with
Simple-fit Ventilation Base

Designed to maximise efficiency and
enhance performance, the refined
and simple to install ventilation base is
supplied with every ProCore®.



b3



First choice for education and healthcare. Built at an ideal height for both adults and children, the B3 also features an ultra-hygienic touch-sensitive control panel, the biggest dispense area in its class for bottles and, a tamper-proof rear cover guard for safety.

REASONS TO CHOOSE

- Ultra-hygienic touch sensitive control panel
- High-capacity dispense area for bottles
- Integrated cup dispenser
- Sealed, hygienic, Direct Chill cooling system
- Viovandt® LED-UV plug-in system available
- Can be retrofitted for touchless dispensing

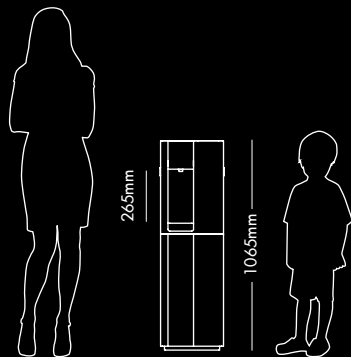


B3 Silver



B3 Black

Distinctive
by design.



WATER SYSTEM

Direct Chill

CONFIGURATIONS

Floorstanding

AVAILABLE COLOURS

Silver / Black

WATER OPTIONS

Chilled / Ambient / Hot / Sparkling

b4

Compact design for flexibility.

Hygienic and ergonomic, B4 elevates all environments - from boardroom to sports hall. Its compact size, large dispense area for bottles, multiple water options and flexible configuration make it Borg & Overström's most popular model.

REASONS TO CHOOSE

- Ultra-hygienic touch-sensitive control panel
- High capacity dispense area for bottles and jugs
- Sealed, hygienic, Direct Chill cooling system
- Floorstanding option comes complete with an internal alarmed waste kit
- Viovandt® LED-UV plug-in system available
- Can be retrofitted for touchless dispensing





B4 Silver Countertop



B4 Black Floorstanding



Distinctive
by design.

WATER SYSTEM

Direct Chill

CONFIGURATIONS

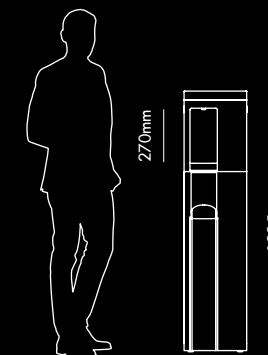
Countertop / Floorstanding

AVAILABLE COLOURS

Silver / Black

WATER OPTIONS

Chilled / Ambient / Hot / Sparkling



b6



Countertop water dispensing reimagined

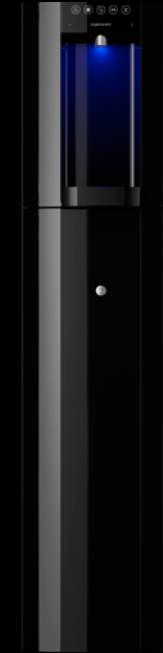
B6 is all new. From the ground up. From its sleeker aesthetics to future-proof digital connectivity, and increased performance, hygiene and sustainability benefits - B6 is the most advanced countertop water dispenser to date. Borg & Overström have redefined countertop water dispensing.

REASONS TO CHOOSE

- Understated and thoughtfully considered ergonomics
- Sustainability at the heart
- Efficient Dry Chill® cooling technology
- Touchless Bluetooth® operation as standard
- Four-way dispense versatility
- Hygiene-assured antimicrobial technology
- Energy-efficient Viovand® LED-UV filtration

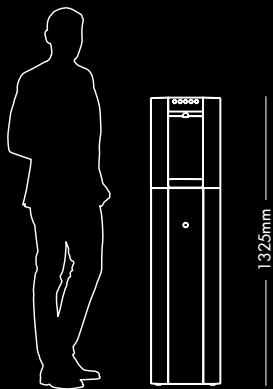


B6 Silver



B6 Black

Distinctive
by design.



WATER SYSTEM

Dry Chill®

CONFIGURATIONS

Floorstanding / Countertop

AVAILABLE COLOURS

Silver / Black

WATER OPTIONS

Chilled / Ambient / Hot / Sparkling

A close-up photograph of a hand holding a clear glass. Water is being poured from a dispenser into the glass, creating a stream of water and many bubbles. The background is dark and out of focus, showing some architectural lines. The lighting is dramatic, highlighting the texture of the hand and the clarity of the water.

Specifications

Tap systems
& dispensers.

		t1	t2	t3	c2/c3	b3	b4	b6
Configurations		Integrated tap	Integrated tap	Integrated tap	Integrated tap	Floorstanding	Floorstanding Countertop	Floorstanding Countertop
Water options	Chilled & Ambient	•	•		•	•	•	•
	Chilled, Ambient & Hot			•		•	•	•
	Chilled & Sparkling	•	•		•			
	Chilled, Sparkling & Ambient	•	•		•	•	•	•
	Chilled, Hot & Sparkling					•	•	
	Chilled, Sparkling, Ambient & Hot			•				•
Dispense height (mm)		310	310	310	286	260	270	290
Water system		Dry Chill®	Dry Chill®	Dry Chill®	Dry Chill®	Direct Chill	Direct Chill	Dry Chill®
Throughput (L/h)	Chilled	ProCore® 50	ProCore® 50 ProCore®+ 80	ProCore® 50 ProCore®+ 80	ProCore®+ 80	30	35	50
	Ambient	ProCore® 50	ProCore® 50 ProCore®+ 80	ProCore® 50 ProCore®+ 80	ProCore®+ 80	U/DOWP*	U/DOWP*	50
	Sparkling	ProCore® 50	ProCore® 50 ProCore®+ 80	ProCore® 50 ProCore®+ 80	ProCore®+ 80	30	35	50
	Hot			ProCore® 16 ProCore®+ 16		6	6	15
	Water temperature (°C)	Chilled & Sparkling	2-11	2-11	2-11	2-11	2-12	2-12
	Hot			92		92	92	92
Maximum running power consumption (kW at 230v)	Chilled & Ambient	ProCore® 140	ProCore® 140 ProCore®+ 210		ProCore®+ 210	100	100	140
	Chilled, Ambient & Hot			ProCore® 1670 ProCore®+ 1710		600	600	1500
	Chilled & Sparkling	ProCore® 200	ProCore® 200 ProCore®+ 260		ProCore®+ 260			
	Chilled, Sparkling & Ambient	ProCore® 200	ProCore® 200 ProCore®+ 260		ProCore®+ 260	140	140	200
	Chilled, Hot & Sparkling					640	640	
	Chilled, Sparkling, Ambient & Hot			ProCore® 1670 ProCore®+ 1710				1600
Operating voltage		230-240	230-240	230-240	230-240	110-115 230-240	110-115 230-240	230-240
Totality®		Standard	Standard	Standard	Standard	Standard	Standard	Standard
Touchless control			Standard	Standard		Optional	Optional	Standard
Alarmed waste kit		Optional	Optional	Optional	Optional	Optional	Standard	Optional
Water connection		3/4" (BSP)	3/4" (BSP)	3/4" (BSP)	8mm (Push-fit)	1/4" (Push-fit)	1/4" (Push-fit)	3/4" (BSP)
CO2 connection (Push-fit)		1/4"	1/4"	1/4"	1/4"	1/4"	1/4"	1/4"
Dimensions WxDxH (mm)		320x375x350 T1 42x163x385	320x375x350 T2 160x325x395	320x471x350 T3 160x324x338	320x375x350 165x230x465 C2 215x240x470 C3	325x380x1065	320x470x1325 320x470x415	320x400x1325 320x400x415
Weight (kg)	Chilled & Ambient	27-30	27-30		28-31 C2	22.45	14.5-27	17
	Chilled, Hot & Ambient			TBC		23.4	16.2-28.7	22.1
	Chilled & Sparkling	27-30	27-30		28-31 C2			
	Chilled, Sparkling & Ambient	27-30	27-30		28-31 C3	28.4	21-33.5	18.65
	Chilled, Hot & Sparkling					30.4	22.9-35.4	
	Chilled, Sparkling, Ambient & Hot			TBC				23.75
Noise - cooling mode (dBA)		48	48	51.5	48	37	47.6	41
Refrigerant type		R290	R290	R290	R290	R600	R600	R290

Distinctive
by design.

Drinking vessels

Refillables help
turn the tide on
plastic waste.





Distinctive
by design.

Biodegradable paper cups
Environmentally-friendly disposable cups designed to fit Borg & Overström cup dispensers perfectly. Custom branding available.

500 & 750ml Swing-top bottles
Suitable for dishwashers and bottle washers. Stylish swing-top stopper seals in freshness and taste. Custom branding available.

Personal drinking bottles
500ml capacity in black or grey frosted soft-touch finish. Comes with quick-release leak-proof cap and carry strap. Custom branding available.

500ml vacuum bottle
Chilly's double wall vacuum bottle - Dual branded Borg & Overström/Chilly's.

Partnerships

We are proud to partner with world-class industry-leading brands.

borg&overström



Representing one of Britain's finest manufacturing companies, John Guest is renowned for water pathway components of the highest quality. John Guest's specialist range of products for drinks dispensing and pure water includes brass and plastic components for the perfect installation.



Widely recognised as one of the leading brands of filters, 3M ensures superior filtration of sediment, chlorine, odours and scale. Quick and easy to fit and highly effective in operation, they provide the highest levels of water hygiene security for your still or sparkling water dispenser.



Distinctive
by design.

Global reach

Our water dispensers are available through selected partners.





Distinctive
by design.

Our international facilities
and relationships provide
support wherever you are.

Get in touch

Our expert staff
are ready and
waiting to help.

call +44 (0)1362 695 006

email enquiries@borgandoverstrom.com





borg&overström

