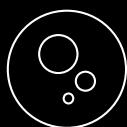


B6

Dispense Options



Chilled



Sparkling



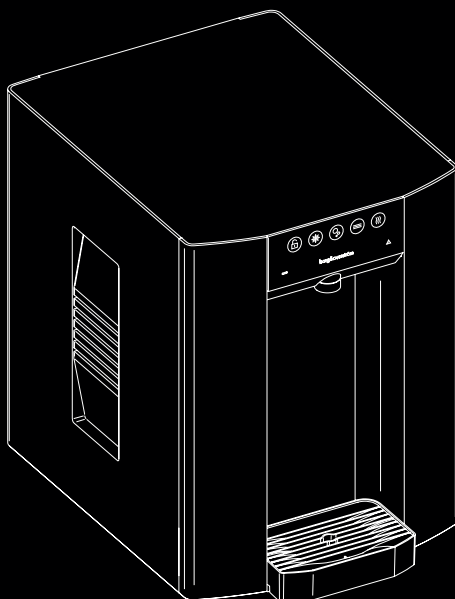
Ambient



Hot

Contents

- Component/Feature Overview
- Operation
- Functions & Controls
- General Safety
- CO2 Bottle Installation
- Fault Finding



Safety

This appliance can be used by children aged from 8 years and above and persons with reduced physical, sensory or mental capabilities or lack of experience and knowledge if they have been given supervision or instruction concerning use of the appliance in a safe way and understand the hazards involved. Children shall not play with the appliance. Cleaning and user maintenance shall not be made by children without supervision.

The unit should be isolated from the electricity supply before removal of any covers. Great care must be employed when working with high pressure carbon dioxide, and in no cases should the maximum operating pressure of 0.4MPa (4 bar) be exceeded.

- The appliance is not suitable for installation in an area where a water jet could be used.
- The appliance has to be placed in a horizontal position.

WARNING: Keep ventilation openings in the appliance enclosure or in the built-in structure clear of obstruction.

WARNING: When positioning the appliance, ensure the supply cord is not trapped or damaged.

WARNING: Do not locate multiple portable socket-outlets or portable power supplies at the rear of the appliance.

This appliance is intended to be used in household and similar applications such as:-

- Staff kitchen areas in shops, offices and other working environments
- Farm houses and by clients in hotels, motels and other residential type environments
- Bed and breakfast type environments
- Catering and similar non-retail applications

A-weighted emission sound pressure level is below 70 dB(A)



R290

R290 is a refrigerant-grade propane used on a wide range of commercial refrigeration and air conditioning units. A highly pure propane, it has a low environmental impact and nominal global warming potential (GWP), meaning it possesses no qualities that can destroy the ozone layer. R290 also is the preferred hydrocarbon alternative of the Environmental Protection Agency (EPA), substituting more harmful fluorocarbon refrigerants like R22, R134a, R404a and R502.

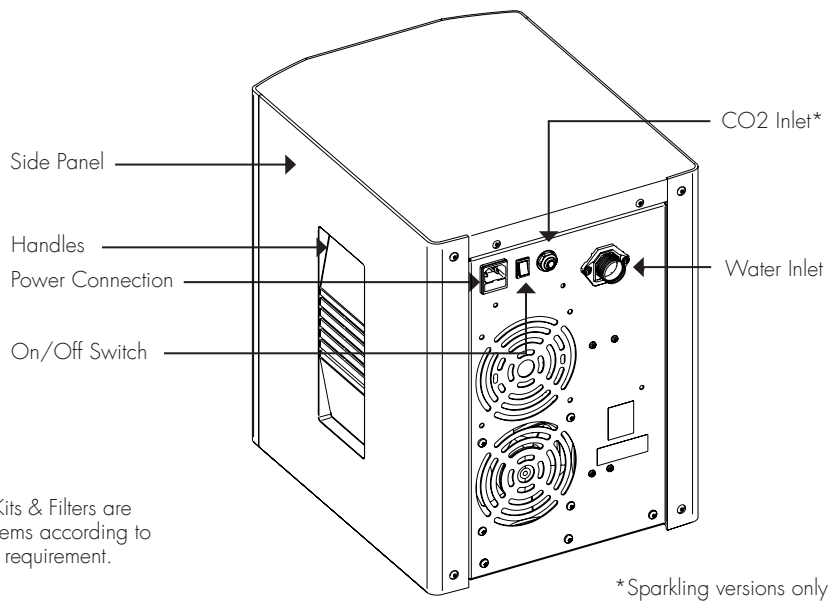
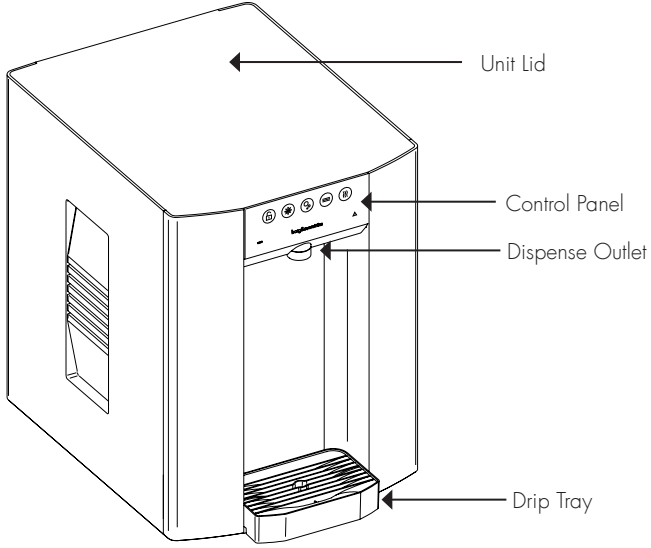
Units with R290 can only be maintained and repaired by authorized technicians who are properly trained and certified.

Component/Feature Overview

B6 Major Components

Contents:

- 1 no B6 Unit
- 1 no Warranty Card
- 1 no Power Cord Set
- 1 no Co2 Regulator with Gauge & Connection tube*



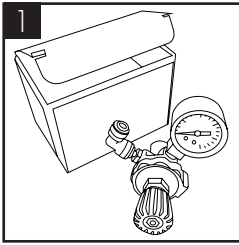
Please Note:
Mains Installation Kits & Filters are supplied as extra items according to individual ordering requirement.

*Sparkling versions only

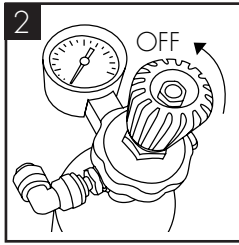
Installation Requirements

- Identify a suitable location for the B6 unit. It should be positioned within 2.0m of suitable services connections. Allow 15cm of free space at the rear for ventilation.
- The B6 unit must be installed in accordance with the relevant requirements of:
 - The appropriate building regulations by application of either The Building Regulations (England and Wales), The Building Regulations (Scotland) or The Building Regulations (Northern Ireland). In territories other than those listed the local regulations in force must be complied with.
 - The Water Supply (Water Fittings) Regulations (England, Wales and Northern Ireland) or The Water Byelaws in Scotland.
- The unit must not be installed where it is liable to freeze. If the unit is thought to be frozen it must not be switched on. It should be allowed to thaw and must then be thoroughly inspected to ensure it is undamaged.
- Water: Mains potable water – internally regulated to 0.2MPa (2 bar)
- Minimum to maximum ambient room operating temperature: 5°C - 35°C
- CO2: Food Grade CO2 to be supplied
- Min mains pressure 0.05MPa (0.5 bar) dynamic
- Electricity: 10A supply – Earth Leakage Protected

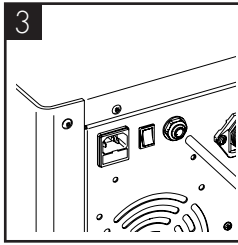
CO2 Bottle Installation - Sparkling Versions Only



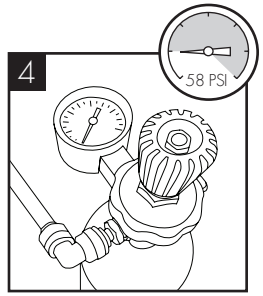
1
Unpack CO2 Regulator and fit elbow fitting to spigot outlet.



2
Attach the regulator to the CO2 bottle, ensuring the small pressure relief vent in the stem is facing away from you or anyone else. Ensure the regulator is closed. Hand tighten securely.

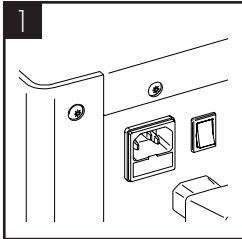


3
Connect the assembled CO2 bottle and regulator to the CO2 inlet using a 1/4" pipe.

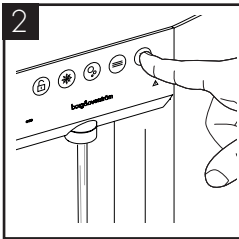


4
Stand the cylinder in a suitable place. We recommend between 3.5 - 4 bar (58 PSI) (max). Do not exceed 4 bar pressure.

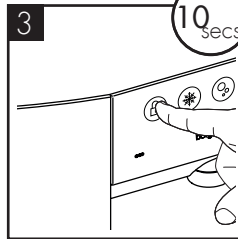
Hot tank commissioning mode - Hot Versions Only



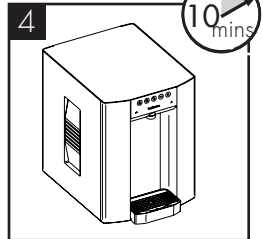
1
Connect the unit to the electricity supply and ensure unit is switched on.



2
The hot versions will be in commissioning mode which stops the unit from running only allowing dispensing. Dispense from unit to ensure tank is full.



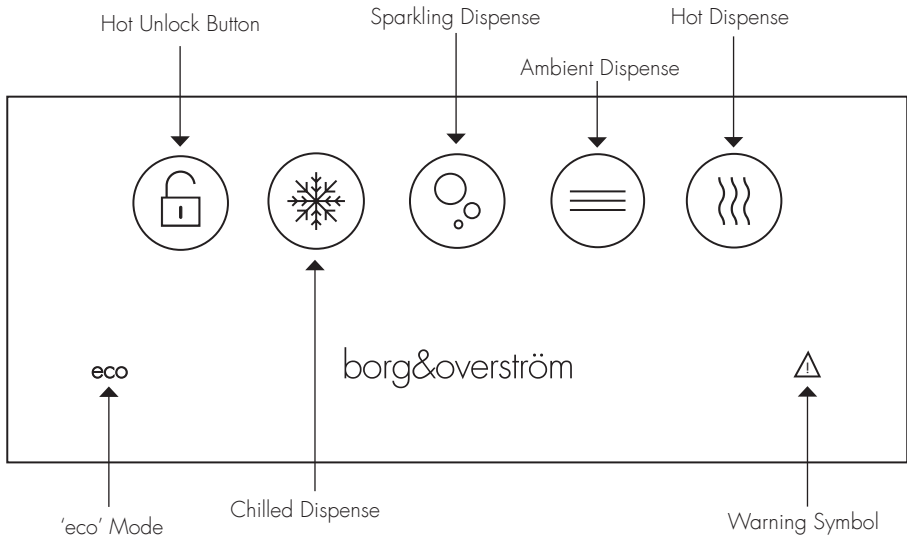
3
Press the lock symbol for 10 seconds to take the unit out of commissioning mode and the LED's and display will change.



4
Allow the machine to stand for 15 minutes for the initial chilling and heating process to complete.

Operation & Connections

Tap Control Panel



Dispensing from unit:

Press and hold dispense icon and release to finish dispense.

For hot press unlock then hold hot button.

Chilled icon flashing - Dry Block is above 10 degrees and chilling down

Hot icon flashing - Hot tank is below 80 degrees and heating up

'eco' Mode:

'eco' mode symbol illuminates when unit is in 'eco' mode, to awaken unit press and hold any dispense icon. The B6 will activate 'eco' mode in the below instances

Dispense inactivity
Low room light level

To turn on/off eco mode tap the chilled icon 7 times and hold on the 7th. 2 beeps will indicate Eco is on and 1 beep will mean Eco is off.

Warning Symbol

'Warning triangle' symbol will illuminate and flash upon a fault. The number of flashes can relate to a particular fault.

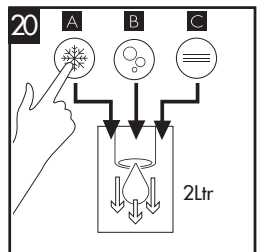
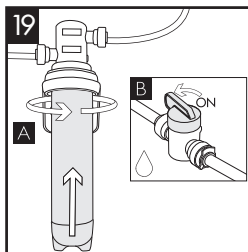
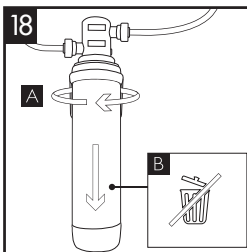
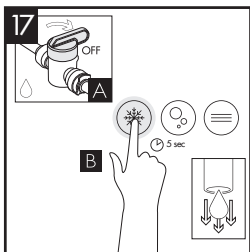
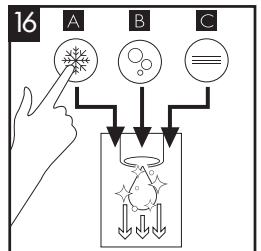
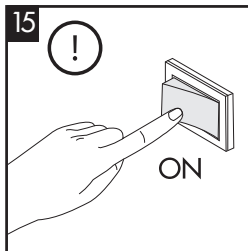
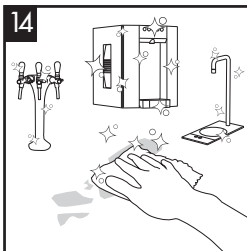
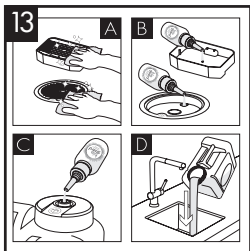
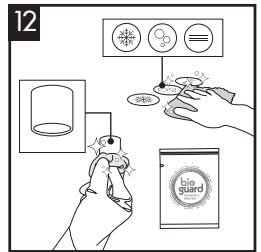
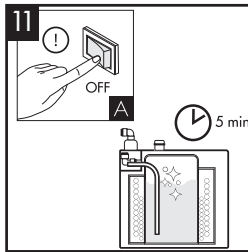
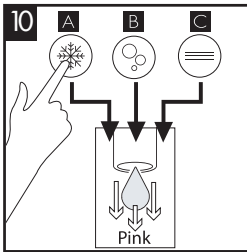
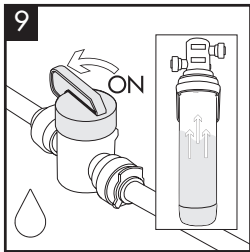
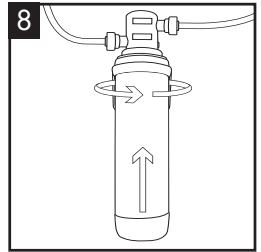
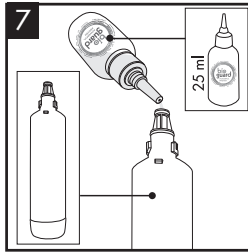
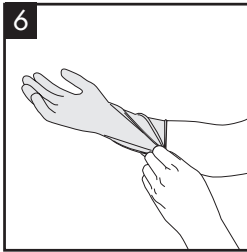
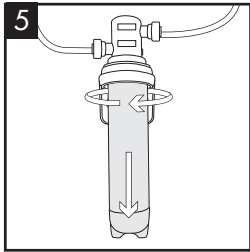
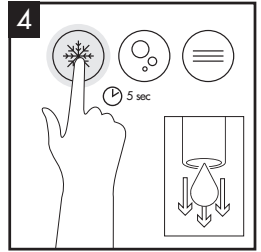
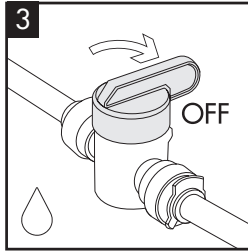
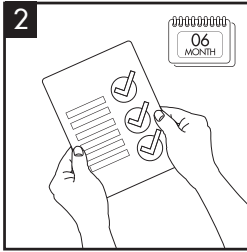
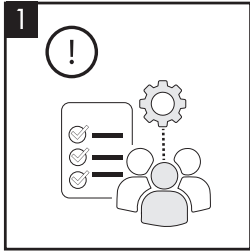
Advanced functions

For technician or operating service provider use only.

Hold 'Hot Unlock Icon' for 10 seconds for decommissioning and commissioning

Sanitisation Guide

To be completed by a technician or service provider



Waste Electrical Products:

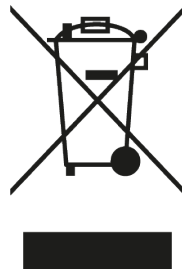
- The WEEE symbol indicates that this item contains electronic components which must be collected and disposed of separately.

- Never dispose of electrical waste in general municipal waste. Collect and dispose of such waste separately.

- Make use of the return and collection systems available to you, or your local recycling programme. Contact your local authority or place of purchase to find out what schemes are available.

- Electrical and electronic equipment contains hazardous substances which, when disposed of incorrectly, may leak into the ground. This can contribute to soil and water pollution which is hazardous to human health; and endangers wildlife.

- It is essential that consumers look to re-use or recycle electrical or electronic waste to avoid it going to landfill sites or incineration without treatment.



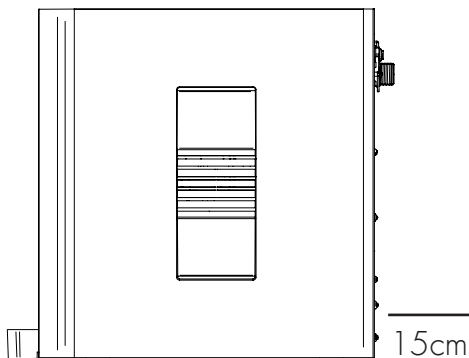
Basic Troubleshooting

Problem/Report	Possible Cause	Suggested Action
No water dispensing	Water supply turned off	Check that power supply, and all taps/ valves/ filters on the incoming water supply are fitted and are turned on
	Leak detection in unit triggered	Disconnect the power and water supply, check for leaks.
	Faulty water pressure regulator, or other failure	Contact your distributor
	Hot tank dry start	Check on heater connections and water supply
	Waste kit full	Empty level sensor tank
No/low sparkling water	No/incorrect CO2 pressure	Check CO2 bottle, regulator and non-return valve. Replace as necessary
	Carbonator tank not filling	Contact your distributor
Warm drinks	Insufficient cooling air flow through the fridge	Contact your distributor
	Faulty compressor, or other failure	
Water lying on top edge of lower door panel and/or bottom of cabinet.	Overflowing drip tray waste container	Empty waste container and check drainpipe is not blocked
Water lying in bottom of machine	Leak in pipe work and/ or filter	Contact your distributor
Bleeping noise	Level sensor fitted and tank full	Empty level sensor tank
Not all symbols showing	Unit is in heater commissioning mode	Check water is dispensing then hold lock symbol 10secs

Refer to instruction manual for full fault codes and diagnostics.

General Safety

- Always place the dispenser in its vertical position, on a surface which can capably support its weight.
- During use this machine must remain in its upright position.
- Adequate ventilation must be allowed. 15cm clearance behind the unit minimum.
- Keep the machine away from sunlight, heat and moisture.
- The environment where this machine is installed must be free of dust and corrosive/explosive gases.



For full distributor
service manual
visit:

[www.borgandoverstrom.com/
manual/b6](http://www.borgandoverstrom.com/manual/b6)

For user guides
for parts and
accessories visit:

[www.borgandoverstrom.com/
en/support/userguides/
accessories](http://www.borgandoverstrom.com/en/support/userguides/accessories)

For warranty visit:

[https://www.borgandoverstrom.
com/en/support/warranty/](https://www.borgandoverstrom.com/en/support/warranty/)



Customer services:
aftersales@borgandoverstrom.com
call +44 1362 695 006